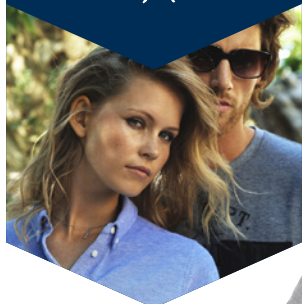


Larkford Women's Cotton Polo

Ladies' modern fit piqué polo with button-down collar, contrast lining inside collar, and contrast ribbing at cuffs.



BLACK



BLACK - BACK VIEW

1: Button-down collar. | 2: Contrast lining inside collar, and contrast ribbing at cuffs. | 3: 100% compact cotton, 250 g/m2

COLOURWAYS



DARK BLUE

DARK BLUE - BACK VIEW

DECORATION

DECORATION OPTIONS

Embroidery / Supacolour / Supasub / Supaetch / Supaflex

Embroidery Area

Chest (Left and Right): 95mm diameter

Sleeves: 95mm diameter

Back: 270mm W x 270mm H

Supacolour Area

Front: up to 210mm W x 297mm H

Back (Under Yoke): up to 210mm W x 297mm H

Back (Above Yoke): 210mm W x 50mm H

Supasub / Supaetch / Supaflex Area

Chest (Left and Right): 95mm diameter

Sleeves: 95mm diameter

Back: 95mm diameter